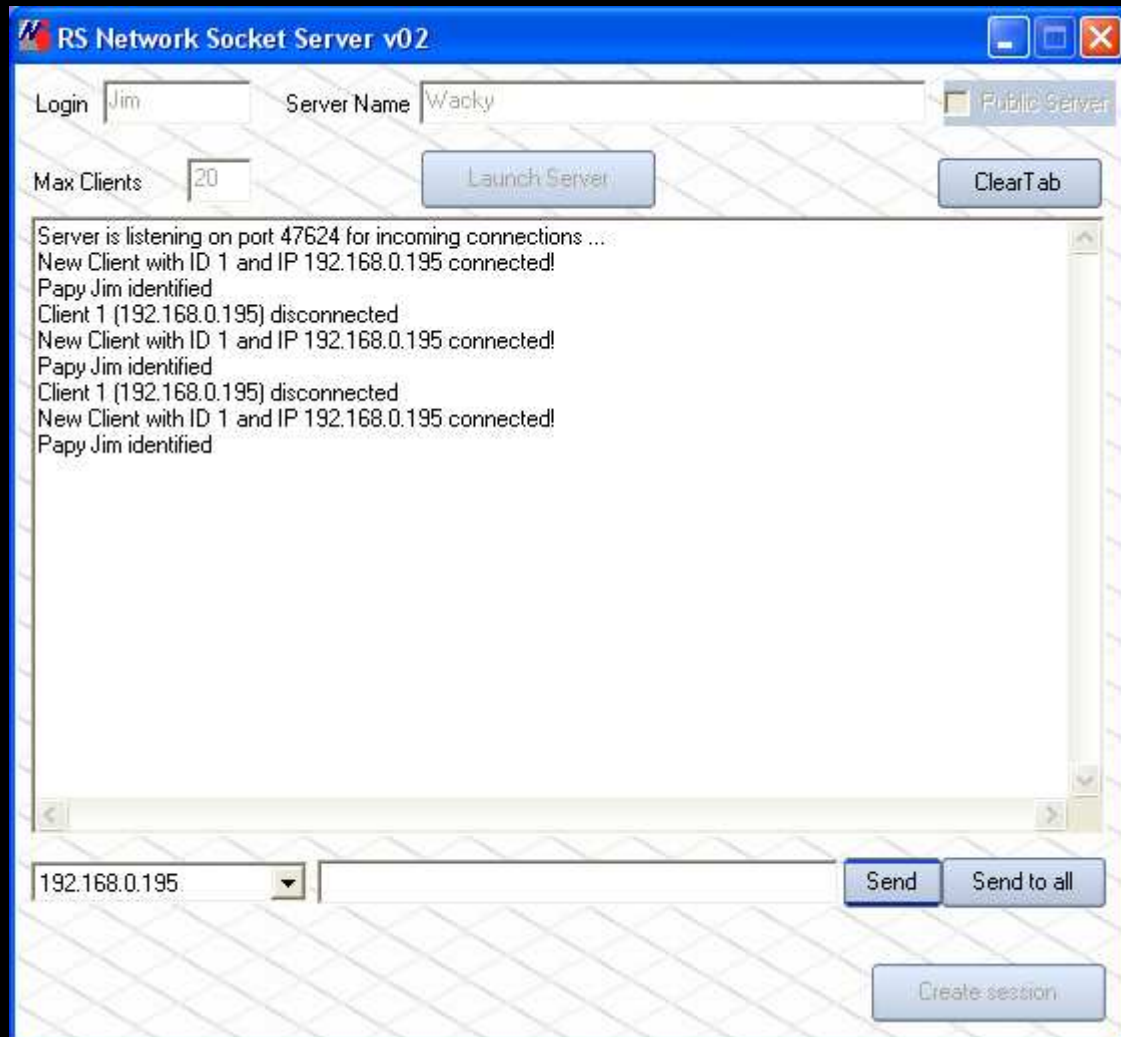


RSNetwork Socket for RSRBR2010 SERVER

Home Page / Accueil



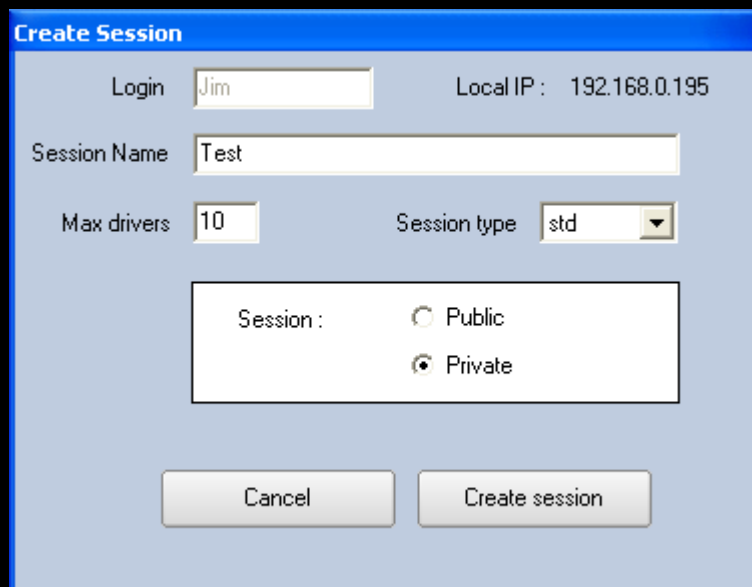
Login : Login to the server / *Nom du serveur*

☐ **Public Server:** Checking this box will be able to have a public server that can be reached by everyone / *Cochez cette case pour que le serveur soit visible par le public*

Max Clients : Max clients who can join this server / *Nombre maximum de clients pouvant rejoindre le serveur*

Launch Server: Start the server / *Démarre le serveur*

Create Session open this page

A screenshot of a 'Create Session' dialog box. The dialog has a blue title bar with the text 'Create Session'. Inside, there are several input fields and controls. At the top left, 'Login' is followed by a text box containing 'Jim'. To the right, 'Local IP : 192.168.0.195' is displayed. Below 'Login', 'Session Name' is followed by a text box containing 'Test'. Below 'Session Name', 'Max drivers' is followed by a text box containing '10'. To the right of 'Max drivers', 'Session type' is followed by a dropdown menu showing 'std'. Below these, there is a section labeled 'Session :' with two radio buttons: 'Public' (unselected) and 'Private' (selected). At the bottom, there are two buttons: 'Cancel' on the left and 'Create session' on the right.

Create Session

Login: Jim Local IP : 192.168.0.195

Session Name: Test

Max drivers: 10 Session type: std

Session :
☐ Public
☒ Private

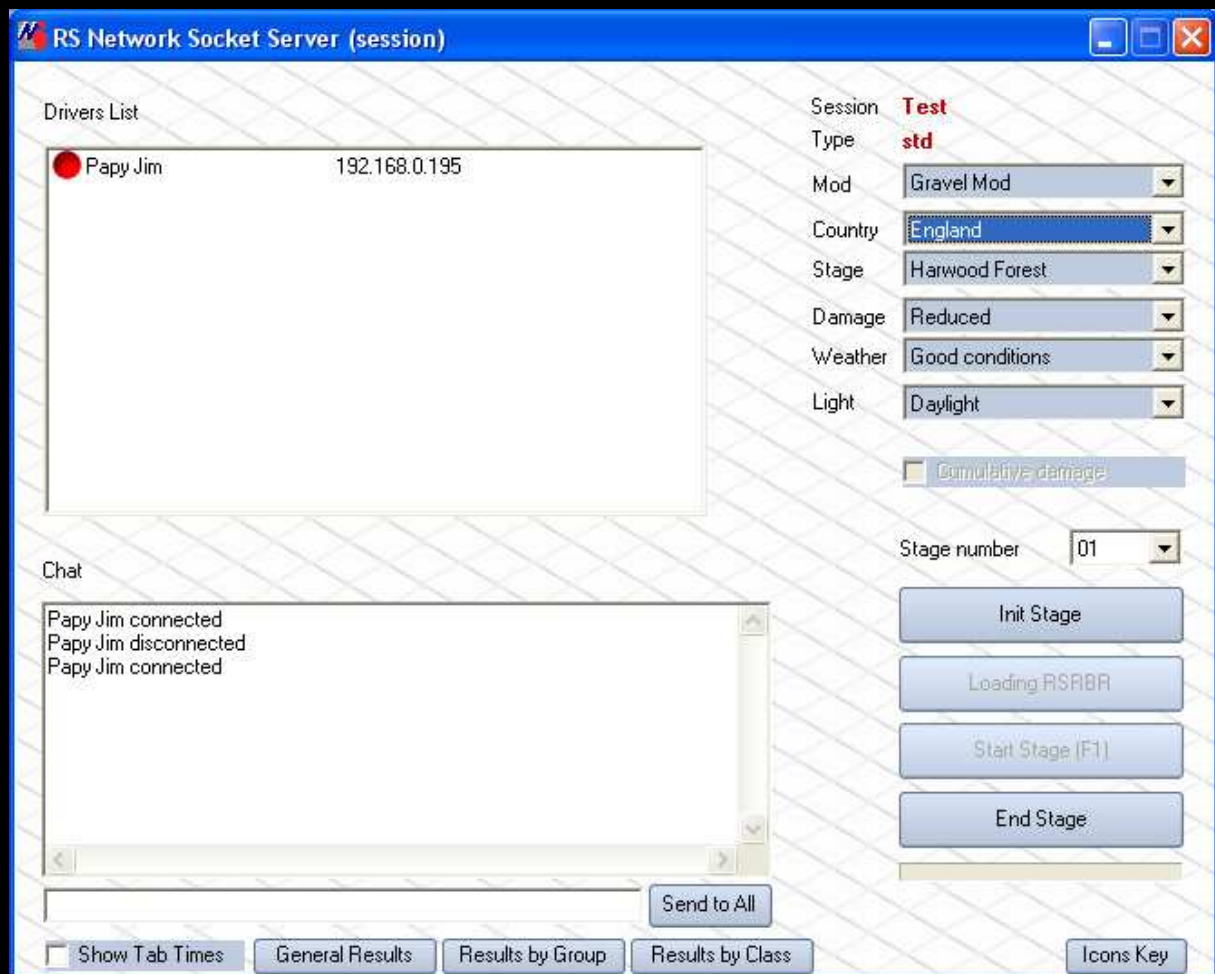
Cancel Create session

Max drivers: Max drivers who can join this session / *Maximum de pilotes pouvant joindre cette session*

Session Public: The session can be seen by everyone / *La session est visible par tous*

Session Private: The session is seen by anyone except clients connected / *La session n'est visible que par les clients connectés*

Create Session open this Page:



Set your session

Click **Init Stage**, wait until the light turns green each driver and then click **Loading RSRBR**. In the game, when all the drivers arrived at the start, the stage will start automatically. To force the start, click **Start Stage** and if you're a driver, use the **F1** key on your keyboard to start the stage.

At the end of the stage (see page **Icons Key**) click **End Stage**, at this time, the counter advances one position.

*Clic sur **Init Stage** attendre que le feu passe au vert pour tous les pilotes, puis cliquez sur **Loading RSRBR**.*

*Pour forcer le départ de la spéciale, cliquez sur **Start Stage**, et si vous êtes un pilote, utilisez la touche **F1** de votre clavier pour lancer la course.*

The results of all can be viewed with **Show Tab Times** and the results can be sorted, General, Group and Class.

*Les résultats sont visibles avec **Show Tab Times** et peuvent être classés par général, Groupe et Classe.*